



### How to become a Tsi Ionteksa'tanonhnha Parent?

- Fill out application form and return to KSCS (references needed)
- KSCS worker to contact you to set up initial meeting/assessment (if applied as a couple, both should be present)
- Criminal background check, and reference checks will be conducted
- Home visit and assessment of your home will be completed

### Who can become a Tsi Ionteksa'tanonhnha Parent?

- All caring and compassionate people with a desire to improve the health and wellbeing of our children
- Must be 25 years old or more
- Able to provide a safe and stable environment
- Have sufficient time to spend with children
- Have sufficient room in the home (child to have own bed)
- Fluent in the child's first language

## Our Team

### The Tsi Ionteksa'tanonhnha Team

Team Leader: **Joan Montour**

Resource Worker: **Lisa Fazio**

Case Aides:

**Muriel Rice**

**Ashley Norton**

**Trudy Jacobs**

### For Additional Information:

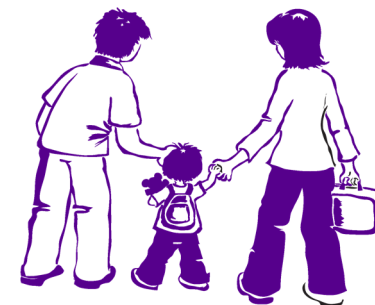
**Joan Montour**

Phone: **450-632-6880 ext.213**

Fax: 450-632-5116

Email: [joanm@kscskahnawake.ca](mailto:joanm@kscskahnawake.ca)

Web: [www.kscs.ca](http://www.kscs.ca)



*Let's Keep our children in Kahnawake*

## TSI IONTEKSA'TANONHNA PROGRAM

*"Where We Mind The Children"*

FOSTER CARE PROGRAM CASE AIDE PROGRAM



Kahnawake Shaktiia'takehnhas

Community Servicers

P.O. Box 1440

Kahnawake, Qc, J0L 1B0

Tel.: 450-632-6880

Fax: 450-632-5116



## What is the Tsi Ionteksa'tanonhnha Program?

The role of the Tsi Ionteksa'tanonhnha Program is to provide support services to Tsi Iontkesa'tanonhnha families who are 'minding' our children.

## Background Information

- The Tsi Ionteksa'tanonhnha (Foster Care) program and the Case Aide Program were developed circa 2000. These programs have developed over the years and continue to complement the holistic approach of KSCS.
- There was a growing need and desire to keep our children in Kahnawake via our own set of foster homes.
- The Case Aide Program developed to assist in supervised visits between child(ren) and their parent(s), and to transport children when clinically needed.

## Tsi Ionteksa'tanonhnha (Foster Care) Program

The main responsibility of the program is to provide a safe and stable environment for children who may be at risk in their family environment. In keeping with our Mohawk tradition of families taking care of each other, our objective is always to seek placement with extended family members. In the event an extended family member cannot take in a child, then an approved KSCS Tsi Ionteksa'tanonhnha home will be used.

*"This has been a fantastic experience, we love every minute of it, it is great to see how these girls have grown and improved"*

*-Tsi Ionteksa'tanonhnha parent on her experience of being a Tsi Ionteksa'tanonhnha parent*

## Services Provided

- Financial Assistance
- Trainings and Workshops
- Educational Support Group
- Emotional Support
- Variety of support and referrals as determined by the Team Leader



## Case Aide Program

The main responsibility of the Case Aide Program is to provide essential services to children who are in Tsi iontekksa'tanonhnha (foster care) Care and Group Home Care through providing transportation and supervision for visits. Case Aides are frontline workers who observe the clients' situation and family environment.

## Services Provided

- **Supervised Visits** - Where the case aide provides an opportunity for families in crisis to interact and enjoy activities that enable them to maintain their bond and re-establish the family unit in a more familiar environment.
- **Transports** - This may include transports to school, to supervised visits, to special activities, and any other transportation that is deemed clinically appropriate.
- **Emergency Childcare** - Within KSCS in the event there is an emergency intervention and childcare is required.